

Key Stage 2 Statutory Assessment Tests 2020

SATs week:

Monday 11 May – Thursday 14 May



KS2 SATS

All children will sit all papers over the four days.

GPS: Paper 1 (short answer) = 45 mins

Paper 2 (spelling) = approx. 20 mins

Reading: Paper 1 = 1 hour

Maths: Paper 1 (arithmetic) = 30 mins

Paper 2 (reasoning) = 40 mins

Paper 3 (reasoning) = 40 mins



KS2 SATS

Date	Activity
Monday 11 May	English grammar, punctuation and spelling papers 1 and 2
Tuesday 12 May	English reading
Wednesday 13 May	Mathematics papers 1 and 2
Thursday 14 May	Mathematics paper 3

HOW THE RESULTS WILL BE REPORTED

Since 2016, scaled scores have been used to report National Curriculum test outcomes.

In July, each pupil registered for the tests will receive:

- a raw score (number of raw marks awarded)
- a scaled score
- confirmation of whether or not they attained the national standard

SCALED SCORES

Scaled scores maintain their meaning over time so that two pupils achieving the same scaled score on two different tests will have demonstrated the same attainment. For example, on our scale 100 will always represent the 'National Standard'.

However, due to the small differences in difficulty between tests, the 'raw score' (i.e the total number of correct responses) that equates to 100 might be different (though similar) each year.



Maths Paper 1 2020

Paper 1 is an arithmetic paper. The children are given 30 minutes to complete the paper, with a maximum score of 40 marks.

The level of difficulty is varied throughout the paper, so it is vital that if children get stuck on a question, they leave it and come back to it at the end.

Arithmetic focuses on the children's pace and accuracy with fluency calculations.



SAMPLE ARITHMETIC QUESTIONS

$$979 + 100 =$$



$$2.5 + 0.05 =$$



$$1,440 \div 12 =$$



$$17 \times 1\frac{1}{2} =$$




Maths Paper 2 and 3 2020

Maths Paper 2 & 3 are both reasoning papers, where children will have to apply all four number operations in order to solve problems.

Both reasoning papers are 40 minutes with a maximum score of 35 marks.

Questions vary in their level of challenge, as well as both papers being of equal difficulty, so if children get stuck on a question, they must leave it and come back to it at the end.



SAMPLE REASONING QUESTIONS

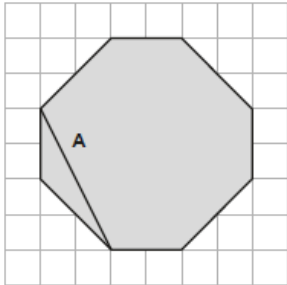
Write the missing number

One is done for you.

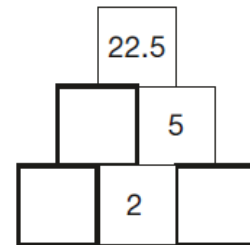
180 $\xrightarrow{\text{Is 20 more than}}$ 160

$\xrightarrow{\text{Is 20 more than}}$ 237

Join two vertices to draw a line **perpendicular** to line A

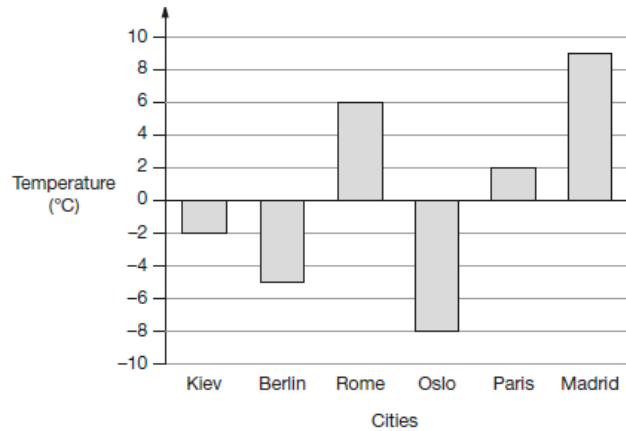


Here is a number Pyramid.
The number in a box is the **product** of the two numbers below it.
Write the missing numbers.



SAMPLE REASONING QUESTIONS

This graph shows the temperature in the cities on one day in January.



Which city was 4 degrees **warmer** than Kiev?

What was the difference between the **temperature** in Oslo and the temperature in Berlin?

°C

On Saturday Lara read $\frac{2}{5}$ of her book.



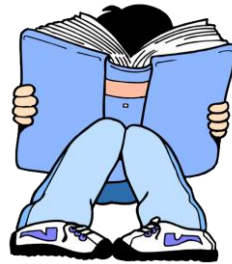
On Sunday she read the **other** 90 pages to finish the book.

How many pages are there in Lara's book?

pages

English Reading Paper 2020

- There will be one reading paper to sit with a separate reading and answer booklet.
- The reading booklet contains three texts, the least demanding text no longer comes first so it will be vital that when children become stuck, they move on and come back once they have finished.
- Children will have one hour to read the texts and complete the questions at their own pace.



Grammar, Punctuation and Spelling **(GPS) 2020**

This test will consist of a 45 minute paper with a maximum score of 50, as well as a spelling paper. The spelling paper will consist of 20 spellings.

The total from the spelling paper will be added to the first paper to gain an overall score out of 70.



The questions are again sporadic and pace is a key component to completing the paper.

Sample GPS Questions

Underline the **verb form** that is in the **present perfect** in the passage below.

Rachel loves music and has wanted to learn how to play the piano for years. She was hoping for piano lessons, and was delighted when her parents gave her a keyboard for her birthday.

Label the boxes with **V (verb)**, **S (subject)** and **O (object)** to show the parts of the sentence.

Nadia ate strawberries.

↑ ↑ ↑

Complete the sentence below so that it uses the **subjunctive form**.

If I _____ to have one wish, it would be for good health.

Explain how the use of **commas** changes the meaning in the two sentences.

Mangoes, which are grown in hot countries, taste delicious.

Mangoes which are grown in hot countries taste delicious.

English Writing

There are NO formal tests in writing. The children will be assessed using teacher assessment only. However, 5 children could be chosen to be 'sampled' where their books (English or creative) will be externally moderated.

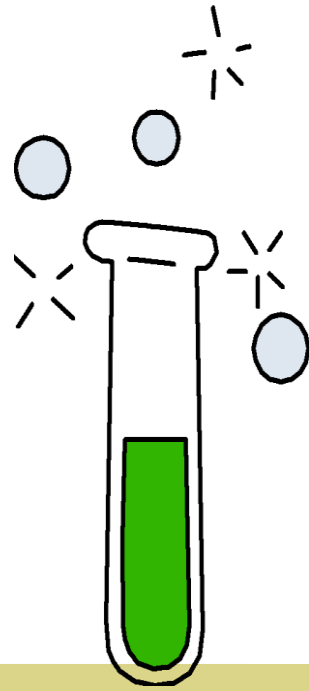


Science

Recent publications have informed us that there will be schools selected for science sampling this year.

We will carry out internal assessments and will continue to teach science, from the New Curriculum, to test standard to ensure pupils are prepared.

The internal assessments will be used to form teacher's judgements.



Monster SATs

<http://www.monstersats-green.co.uk/>

All children have an individual login for Monster SATs that they have been given, which is recorded in their red Home/School Link book.

On the website children can access different games, which allow them to revise maths, reading and GPS.

The children can also take tests, which are in the style of SAT papers – these will be marked online and give the children feedback instantly. These results are also then emailed to the teacher to review.

We would like children to complete at least one test per week and be using the games regularly as revision.



What can you do to help?

In addition to Monster SATs, you may wish to look at and work through past SATs papers. Even though the format of SATs has changed, the type of questions remain similar in maths reasoning and reading.

- Primary Tools (<http://primarytools.co.uk/pages/pastpapers.html>)
- DfE Sample Tests/ Test Framework 2016
(<https://www.gov.uk/government/collections/national-curriculum-assessments-2016-sample-materials>)

Breakfast Club

In previous years we have held a breakfast club on each morning of the tests.

These have been highly successful, giving the children a relaxed start to the day.

A letter detailing 'Breakfast Club' will be published closer to the time.



Encourage your children to work hard and practise at home!

